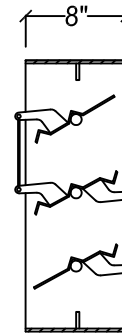
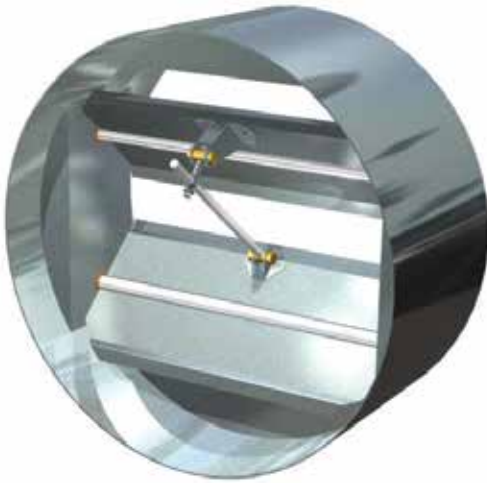
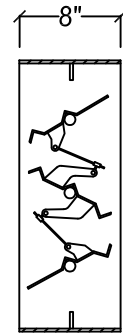


**ROUND MULTI-BLADE DAMPER**

The Model R-PB & R-OB was developed to maintain a more even airflow through the duct system.



MODEL R-PB
(parallel blade)



MODEL R-OB
(opposed blade)

approx. 1/4" o.d. undersized

STANDARD FEATURES:

FRAME: 16 ga galvanized steel, 8" deep

BLADES: 16 ga galvanized steel

BEARINGS: 1/2" dia. self lubricating porous bronze

BEARING PINS: 1/2" x 2" long plated steel rods

HARDWARE: Plated brackets, brass pivots, 1/4" dia. steel rods

CONTROL ROD: 1/2" x 9" long plated steel

FINISH: galvanized

MAX. TEMP.: 200°F

MAX. VELOCITY: 2000 FPM

MIN. SIZE: 12" Ø

MAX. SIZE: 44" Ø

OPTIONS:

- ☐ Blade seals (EPDM) 180°F
- ☐ #304 stainless steel (including linkage)
- ☐ Actuators
- ☐ Powder coated (epoxy)
- ☐ Powder coated (polyester)

Job Name:

Location:

Architect:

Engineer:

Contractor:

☐ **MODEL R-PB, R-OB**