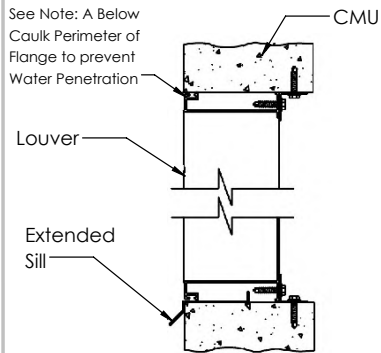


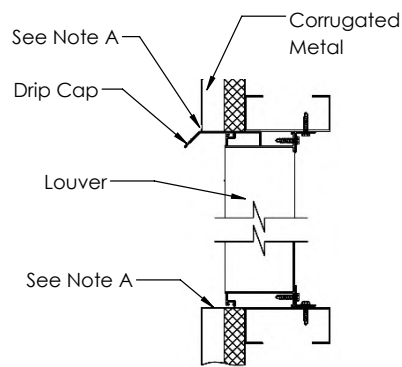


Louver Installation Instructions

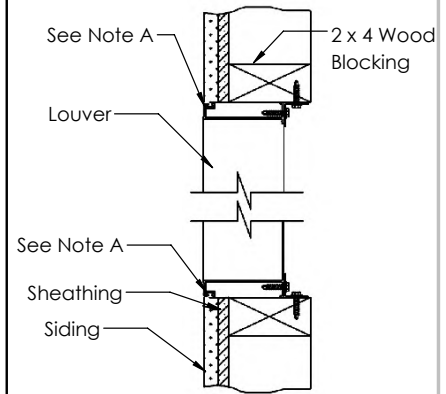
Masonry Wall



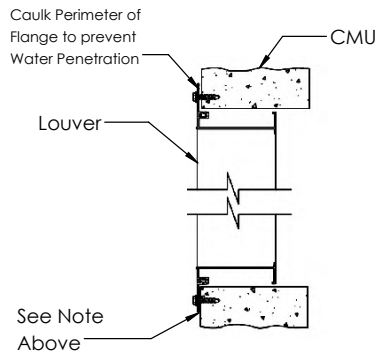
Metal Panel Wall



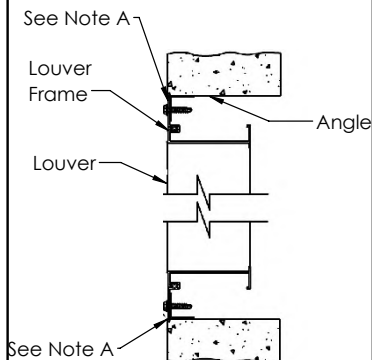
Wood Instalation



Flange Mount

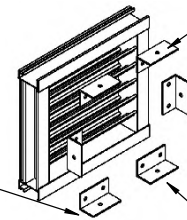


Angle Subframe



Suggested are (2) 7/32" diameter
holes & (2) #10 x 5/8" sheet metal screws
for angle attachment to louver. Not by CVS

To prevent corrosion,
apply heavy coating
of bituminous paint on
any surface in contact
with concrete, masonry
or dissimilar metals

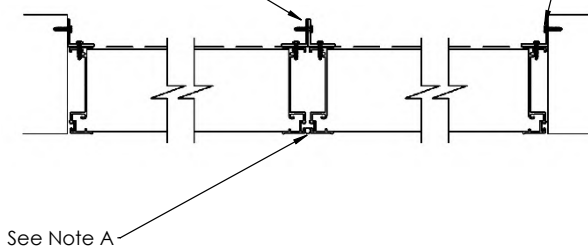


Holes for attachment to wall conditions
drilled in field by customer. Anchor
for your specific installation not supplied by CVS

Multi-Section Assembly / Plan View

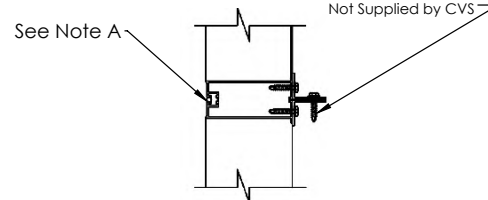
Attach Louver Sections together with vertical
angles or angle clips and min. #10sms, placed
12" max. o.c., $\Phi 3/8"$ thru bolts may also be used.
Not Supplied by CVS

Holes for attachment to wall conditions
drilled in field by customer. Anchors
for your specific installation
not supplied by CVS



Multi-Section Assembly / Elevation View

Optional: Attach louver sections
together with horizontal angles
or angle clips and min. #10 sms,
placed 12" max. o.c., $\Phi 3/8"$
thru bolts may also be used.
Not Supplied by CVS



Note A: After the louver is secured to the substrate, install backer rod and caulking (not provided by CVS) around the perimeter of the louver to the substrate and at section joints where possible. If mullion strips are provided, place caulk behind mullion strip (if possible) before attaching. If mullion strips already installed, apply a small bead where it touches the louver. Due to continuing research, **Central Ventilation Systems (CVS)** reserves the right to change specifications without notice.