

**BACKDRAFT DAMPERS****COUNTERBALANCED DAMPER****MODEL CD:**

The Counterbalanced Damper has been developed due to a response from contractors requiring an easy to balance damper. There are many applications: Heat Pump Relief, By Pass, etc. The CD can be adjusted by moving the weights up or down or rotating the extension arm.

STANDARD CONSTRUCTION:

Frame: Galvanized Steel, see chart for gauge

Blade: Light Weight Galvanized Steel

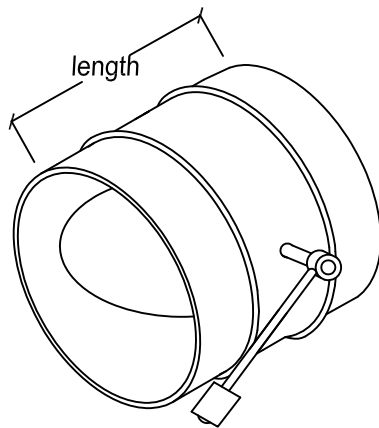
Bearing: Nylon 6/6

Axle: Aluminum Shaft 1/2" Dia.

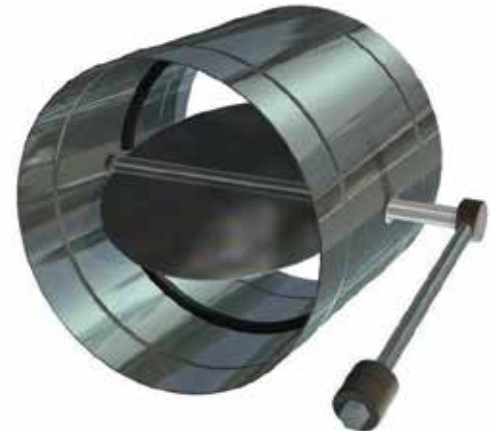
Seal: Volera gaskets in closed position for minimal leakage.

OPTIONS:

- ☐ 304 Stainless Steel Construction
- ☐ 316 Stainless Steel Construction
- ☐ Additional Weights

**MODEL CD**

o.d. undersized approx. 1/8"



DIAMETER	LENGTH	FRAME & BLADE THICKNESS
4 - 10"	8"	24 GA GALVANIZED
12" - 18"	8"	20 GA GALVANIZED
20" - 32"	8"	18 GA GALVANIZED

PERFORMANCE						
DIAMETER		CFM		DIAMETER		CFM
6"		250		18"		3000
7"		300		20"		3700
8"		400		22"		4400
9"		600		24"		5300
10"		750		26"		6200
12"		1200		28"		7200
14"		1800		30"		8300
16"		2400		32"		9400

Sizes Available:

4", 5", 6", 7", 8", 9", 10", 12", 14", 16", 18", 20", 22", 24", 26", 28", 30", 32"

Job Name:

Location:

Architect:

Engineer:

Contractor:

☐ **MODEL CD**