

Reference:

Client:

Project:

Consultant:

Location:

Contractor:

Date:

Submitted by:



Your Reliable HVAC Partner

Model CB-600 Series

Backdraft/Pressure Relief Dampers

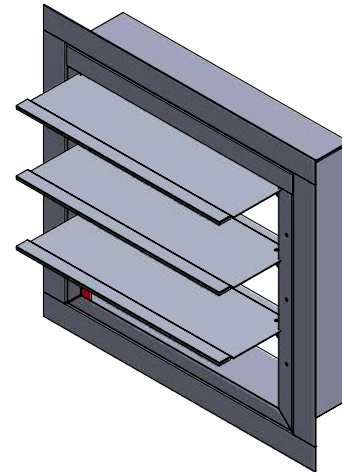
Application:

The CVS Backdraft Dampers (also called gravity dampers) CB-600 Series allow airflow in one direction and prevent reverse airflow for use in exhaust or intake HVAC systems suitable for wall mounted applications.

Backdraft dampers can either be operated by gravity (where pressure or velocity opens and gravitational force closes the damper). These models can be provided with counter balance weights in order to assist or retard the opening of the damper.

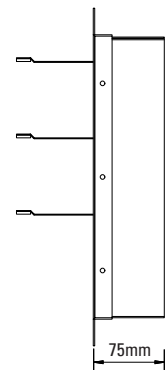
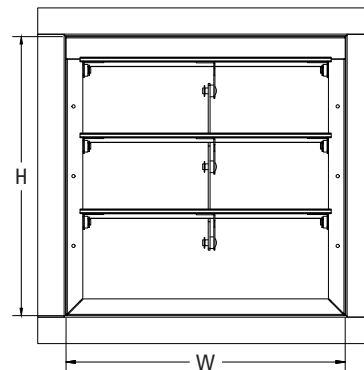
Standard Construction:

	Standard	Optional
Frame Material	20 gauge galvanized steel	Galvanized steel and aluminum with different thicknesses
Frame Depth	75mm	-----
Flange	30mm	Consult factory for other sizes
Blade Material and Type	24 gauge galvanized steel	Galvanized steel and aluminum with different thicknesses
Blade Seal	Rubber Foam	Neoprene
Dimensions	Actual - 6mm	Actual
Axle Material	Plated steel	-----
Axle Bearings	Synthetic	-----
Finishes	Mill Finish	Powder Coated
Counter Weight	None (Backdraft)	Counter Weight (PRD)



Front View

Side View

**Minimum & Maximum Sizes:**

Model	Minimum Single Section	Maximum Single Section	Maximum Multi Section
CB-600 Series	6" x 6" (152 x 152)	40" x 40" (1016 x 1016)	Unlimited Size (Please consult factory)

All dimensions shown in inches, parentheses () indicate millimeters.

Optional Construction:

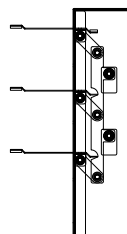
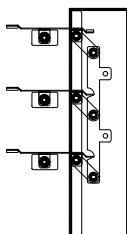
Insect Mesh

Bird Mesh

Counter Weight Options for Pressure Relief Dampers:

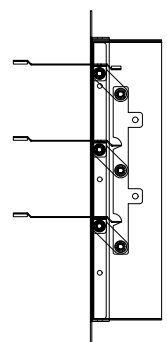
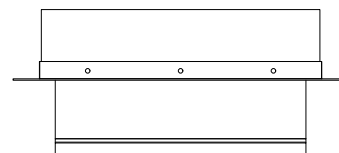
Counter Weight at Blade's Front Side

Counter Weight at Blade's Back Side



Top View

Section View



As part of our continuous improvement program, we reserve the right to make further improvements without notice.

Submittal